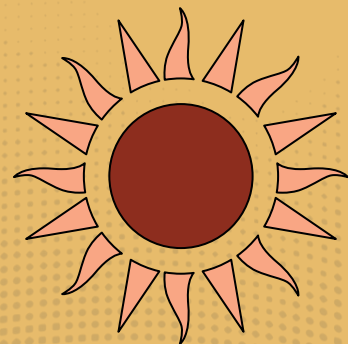




Quand ?

- Début : 27 septembre 2021
- Fin : 13 juin 2022
- Durée : 1h30
- Chaque **lundi** de 14h45 à 16h15



QUOI ?

1 thème / 3 pôles

La mémoire salvadorienne sous toutes ses formes

Pôle 1



Museo Forma

Projet annuel
Création d'oeuvre d'art
Partenariat

Pôle 2



Médias

Projet semestriel
Création de contenus
médiatiques sur un blog

Pôle 3



Mémoire du
passé

Projet semestriel
Mise en place d'une
exposition

1 pôle annuel

Toute l'année scolaire : du 27/09 au 13/06



Un groupe de 30 élèves engagés
dans un projet annuel

Création d'oeuvre d'art
Partenariat avec le Museo Forma

2 pôles semestriels

Semestre 1 : du 27/09 au 31/01



Pôle Média



Pôle Mémoire Maya

Semestre 2 : du 07/02 au 13/06



Pôle Mémoire
Contemporaine



Pôle Média

Deux groupes de 30 élèves engagés
dans un projet semestriel

Présentation des 3 pôles



Pôle #01

Museo Forma



Pôle #02

Médias



Pôle #03

Mémoire du passé

MUSEO FORMA

The background features a complex composition of overlapping shapes and patterns. On the left, there are solid orange and yellow shapes. In the center, a large white shape with a fine dot pattern overlaps a brown shape with a similar dot pattern. On the right, a teal shape with a dot pattern is visible. A thin black horizontal line with diamond-shaped ends spans across the bottom of the text area.

L'ÉQUIPE DU PÔLE MUSEO FORMA



M. Escobar

English teacher



Mme Olivo

Professeure d'espagnol



Mme Olmedo

Professeure d'espagnol



M. Martinez

Intervenant Museo Forma

MUSEO FORMA

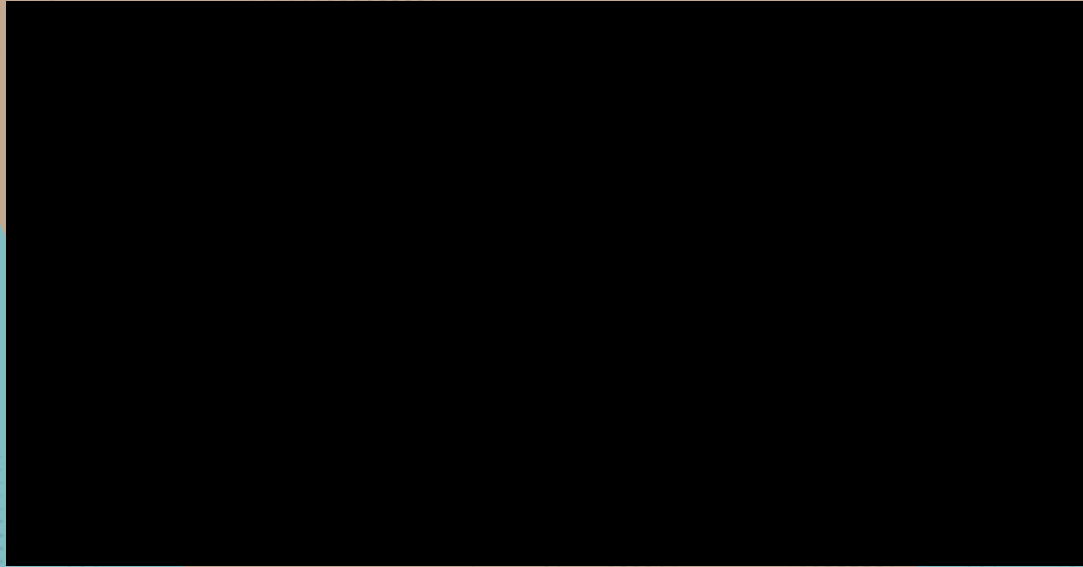
1- TALLERES
CON EL
CURADOR
DEL MUSEO
FORMA ...

2- VISITAS
EN
PEQUEÑOS
GRUPOS AL
MUSEO...

3-
CREACIÓN
ARTÍSTICA
SOBRE LAS
OBRAS
ESCOGIDAS.

4- PRESENTACIÓN DE LAS OBRAS EN EL MUSEO

MANTENER SU LEGADO



POLE MEDIAS

CRÉATION DE CONTENUS MÉDIATIQUES

L'ÉQUIPE DU PÔLE MEDIA



Mme ALVAREZ

**Professeur de français et
spécialiste presse écrite**



Mme BLANCARD

**Professeure-documentaliste
spécialisée EMI et Webradio**



M. ZELAYA

**English teacher
et animateur Radio**

Le pôle média s'articule autour de 3 ateliers :

- un atelier d'élaboration de reportages radiophoniques (podcasts) en lien avec les 2 thématiques : La mémoire pré-hispanique salvadorienne (semestre 1) et la mémoire contemporaine salvadorienne (semestre 2) ; grâce à la rencontre avec des artistes salvadoriens, un témoin historique, des journalistes et des visites dans des musées salvadoriens (MUNA, MUPI).
- un atelier presse écrite avec la rédaction d'articles de presse et de photo-reportage.
- un atelier d'élaboration de reportages radiophoniques (podcasts) sur des sujets libres.

Tous les élèves du pôle média publieront leurs productions finales sur le blog média du projet 4ème.



3 ateliers



La Presse

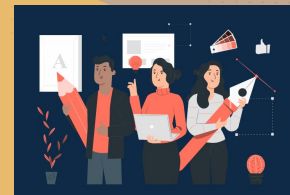
PRESSE et PHOTO-REPORTAGE

Rédaction d'articles de
presse et
photo-reportage
Publication sur le blog



PODCASTS RADIO

Écoutes radiophoniques
Écritures radiophoniques
Reportage radio
Montage radio
Diffusion des podcasts
sur le blog



BLOG

BLOG MEDIA

Création d'un espace de
publication numérique
pour découvrir les
productions médiatiques
des élèves

Des ateliers de 13 semaines

REFLEXION

Exploration et
délimitation du sujet



ACTION

Reportage sur le terrain
Interviews d'intervenants
extérieurs et d'élèves
Prise de son



PUBLICATION

Des reportages
presse et radio sur
le blog




ECRITURE

Choix du sujet et de
l'angle traité
Choix du type de
reportage radio



FINALISATION et MONTAGE RADIO

Relecture des articles
Montage Audacity

A stylized map of the African continent is the central focus, rendered in a light beige color with a fine dot pattern. The map is held up by several hands in various shades of yellow, orange, and brown, symbolizing unity and support. The background consists of large, abstract shapes in teal, brown, and yellow, also featuring the dot pattern. The text 'POLE MEMOIRE' is prominently displayed in a dark blue, serif font, centered over the map. A horizontal line with arrowheads at both ends is positioned below the text.

POLE MEMOIRE

Mémoire historique du passé

L'ÉQUIPE DU PÔLE MÉMOIRE



Mme Mondel

**Professeure d'histoire en
collège**



M. Soccorsi

**Professeur d'histoire en
collège**



M. Zindy

**Professeur d'histoire en
collège**

Semestre 1

Pôle mémoire Maya

Quand ?

→ Du 27 septembre 2021 au 31 janvier 2022.

Comment ?

- Travaux de recherche.
- Débats
- Entretien(s)
- Visite du site de San Andrés.

Pourquoi ?

- Comprendre l'histoire des peuples précolombiens.
- S'interroger sur leur place dans la mémoire salvadorienne.

Objectif :

Réaliser une exposition multimédia au CCC.



Semestre 2

Pôle mémoire contemporaine



Quand ?

Du 7 février au 13 juin 2022



Comment ?

Travaux de recherche, débats,
entretien(s),
Visite d'un lieu de mémoire.



Pourquoi ?

Comprendre l'histoire et les
symboles contemporains du
Salvador.

S'interroger sur les identités
salvadoriennes actuelles.



Objectif :


Réaliser une exposition
multimédia à l'espace
culturel le 20 juin 2022

MERCI !



AVEZ-VOUS DES QUESTIONS ?

CREDITS: This presentation template was created by Slidesgo, including icons by Flaticon, infographics & images by Freepik

A vintage map of Europe and the Atlantic Ocean is shown with a magnifying glass over the British Isles. A dotted grid is overlaid on the map. The text 'A PICTURE IS WORTH A THOUSAND WORDS' is centered in a bold, serif font. A horizontal line with arrowheads at both ends is positioned below the text.

**A PICTURE IS WORTH A
THOUSAND WORDS**

A PICTURE ALWAYS REINFORCES THE CONCEPT

Images reveal large amounts of data, so remember: use an image instead of a long text. Your audience will appreciate it



3 ateliers médias

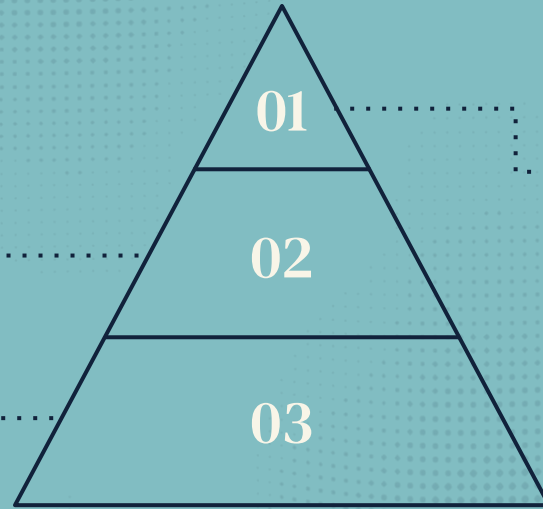


Podcasts radio

Despite being red, Mars is actually a cold place. It's full of iron oxide dust

Un blog commun

Venus has a beautiful name and is the second planet from the Sun



Presse écrite

Mercury is the smallest planet and the closest one to the Sun

TIMELINE SPANISH EMPIRE

CONQUEST

Jupiter is the
biggest planet

1492



1494



1550



1826

COLONIAL

Venus has a
beautiful name

TORDESILLAS

Mercury is the
smallest planet

FALL

Neptune is very
far from the Sun

TERRITORIES CONQUERED

◆ SPANISH EMPIRE

Mercury is the smallest planet

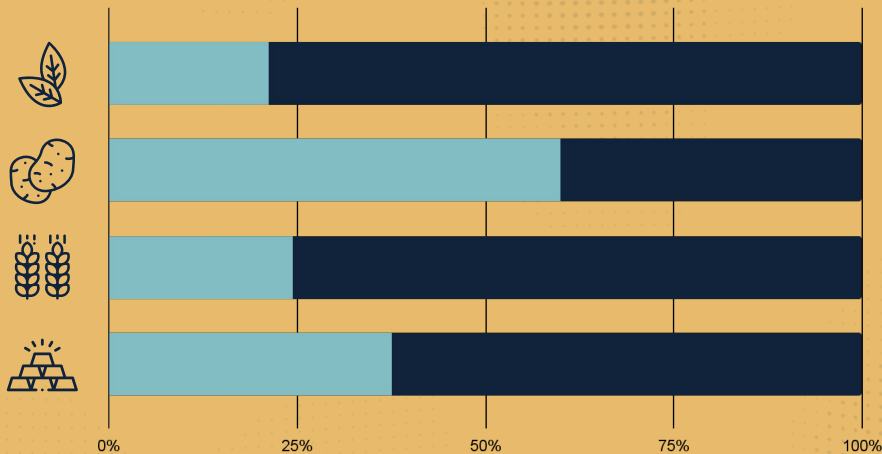
◆ PORTUGUESE EMPIRE

Mars is actually a cold place



COLONIAL STAGE

◆ Period 01 ◆ Period 02



TOBACCO

Venus has high temperatures

POTATO

Mercury is the smallest planet

CORN

Mars is actually a cold place

GOLD

The Earth is the third planet

Follow the link in the graph to modify its data and then paste the new one here. For more info, click here.

INDEPENDENT COUNTRIES NOWADAYS

ARGENTINA

COSTA RICA

HAITÍ

PARAGUAY

BOLIVIA

CUBA

HONDURAS

PERÚ

BRASIL

ECUADOR

MÉXICO

R. DOMINICANA

CHILE

EL SALVADOR

NICARAGUA

URUGUAY

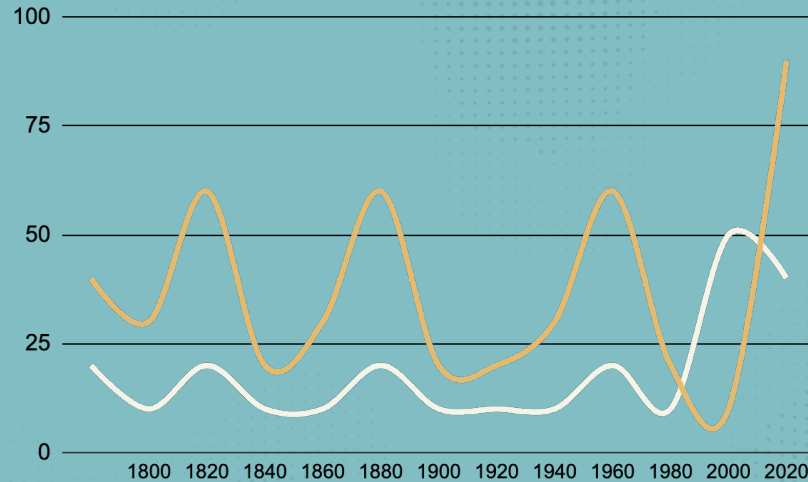
COLOMBIA

GUATEMALA

PANAMÁ

VENEZUELA

SOCIAL DIFFERENCES



◆ DEMOCRACY

Mercury is the smallest planet and the closest one to the Sun

◆ ECONOMY

Despite being red, Mars is actually a cold place. It's full of iron oxide dust

DESKTOP SOFTWARE

You can replace the image
on the screen with your own
work. Just right-click on it
and select “Replace image”





TABLET APP

You can replace the image on the screen with your own work. Just right-click on it and select “Replace image”

ALTERNATIVE RESOURCES

Here's an assortment of alternative resources whose style fits the one of this template:



ALTERNATIVE RESOURCES



ALTERNATIVE RESOURCES



RESOURCES

Did you like the resources on this template? Get them for free at our other websites:

VECTORS:

- **Colorful gradient halftone effect background**
- **Political world map**

PHOTOS:

- **Close-up magnifying glass on map**
- **High angle small origami boat on map**



RESOURCES

Did you like the resources on this template? Get them for free at our other websites:

ICONS:

- **Icon Pack: History**
- **Tobacco**
- **Gold**
- **Xochitl**
- **Ocelotl**
- **Quetzalcoatl**
- **Cozcacuauhtli**
- **Quiahuitl**
- **Cuetzpalin**
- **Cuauhtli**
- **Potato**
- **Aztec I**
- **Aztec II**
- **Aztec III**
- **Aztec pyramid**
- **Maya calendar**
- **Inca cola**
- **Chakana**
- **Moray**
- **Maya**
- **Ozomatli**
- **Malinalli**
- **Ehecatl**
- **Mask**

RESOURCES

Did you like the resources on this template? Get them for free at our other websites:

ICONS:

- Aztec IV
- Indian
- Protest
- Recession
- Capitol
- Team
- Conquistador
- Calculator
- Inca

- Machu Picchu
- Sun

Instructions for use

In order to use this template, you must credit [Slidesgo](#) by keeping the **Thanks** slide.

You are allowed to:

- Modify this template.
- Use it for both personal and commercial projects.

You are not allowed to:

- Sublicense, sell or rent any of Slidesgo Content (or a modified version of Slidesgo Content).
- Distribute Slidesgo Content unless it has been expressly authorized by Slidesgo.
- Include Slidesgo Content in an online or offline database or file.
- Offer Slidesgo templates (or modified versions of Slidesgo templates) for download.
- Acquire the copyright of Slidesgo Content.

For more information about editing slides, please read our FAQs or visit Slidesgo School:

<https://slidesgo.com/faqs> and <https://slidesgo.com/slidesgo-school>

Instructions for use (premium users)

As a Premium user, you can use this template without attributing [Slidesgo](#) or keeping the "Thanks" slide.

You are allowed to:

- Modify this template.
- Use it for both personal and commercial purposes.
- Hide or delete the "Thanks" slide and the mention to Slidesgo in the credits.
- Share this template in an editable format with people who are not part of your team.

You are not allowed to:

- Sublicense, sell or rent this Slidesgo Template (or a modified version of this Slidesgo Template).
- Distribute this Slidesgo Template (or a modified version of this Slidesgo Template) or include it in a database or in any other product or service that offers downloadable images, icons or presentations that may be subject to distribution or resale.
- Use any of the elements that are part of this Slidesgo Template in an isolated and separated way from this Template.
- Register any of the elements that are part of this template as a trademark or logo, or register it as a work in an intellectual property registry or similar.

For more information about editing slides, please read our FAQs or visit Slidesgo School:

<https://slidesgo.com/faqs> and <https://slidesgo.com/slidesgo-school>

Fonts & colors used

This presentation has been made using the following fonts:

DM Serif Text

<https://fonts.google.com/specimen/DM+Serif+Text?query=DM+SERIF+TEXT>

#11223b

#81bdc2

#835b35

#f8f5e8

#c1a88f

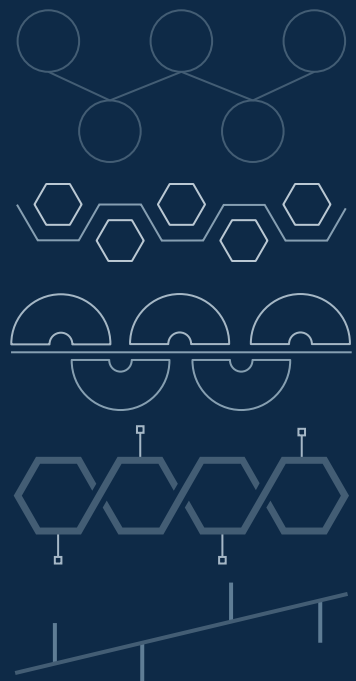
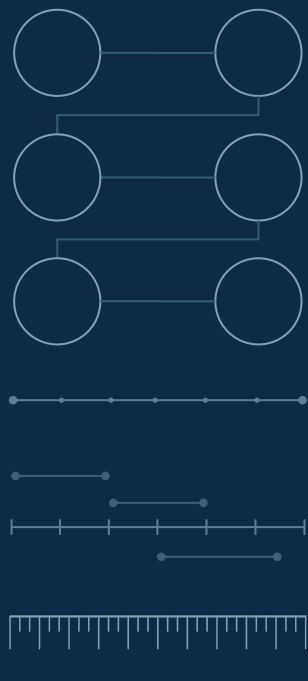
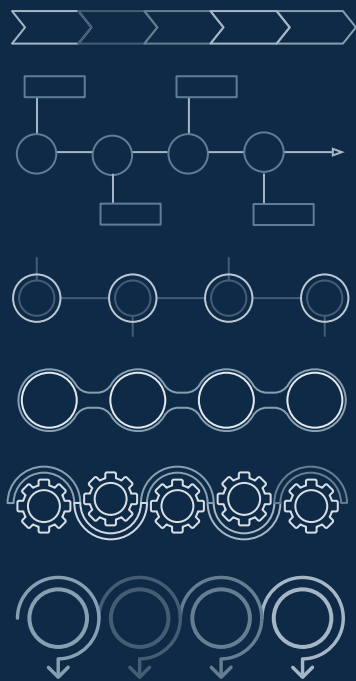
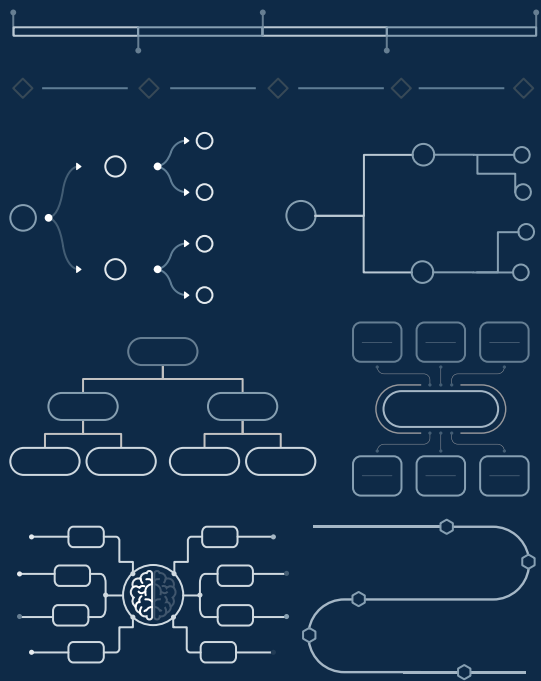
#e7bb6b

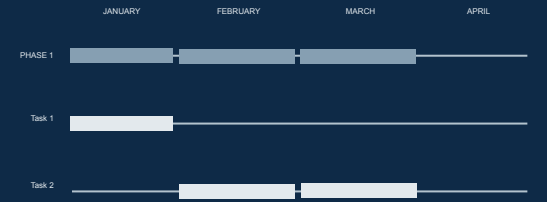
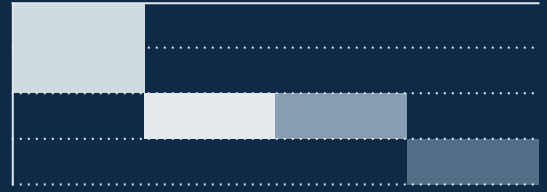
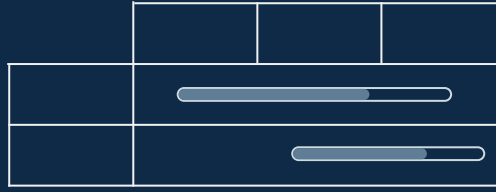
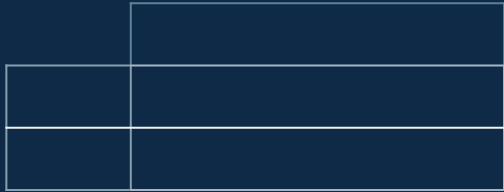
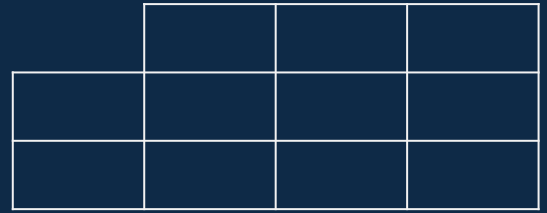
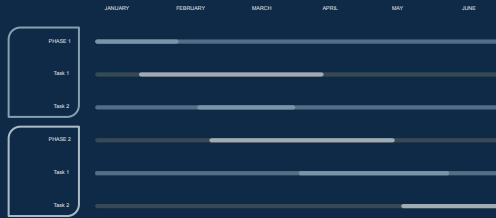
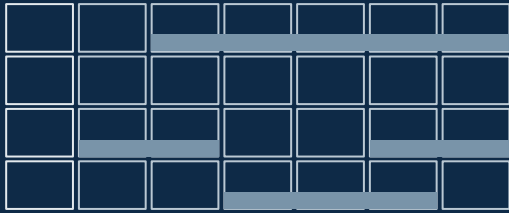
Use our editable graphic resources...

You can easily [resize](#) these resources without losing quality. To [change the color](#), just ungroup the resource and click on the object you want to change. Then, click on the paint bucket and select the color you want. Group the resource again when you're done. You can also look for more [infographics on Slidesgo](#).

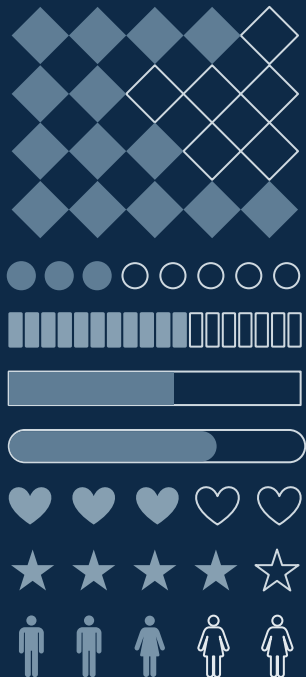
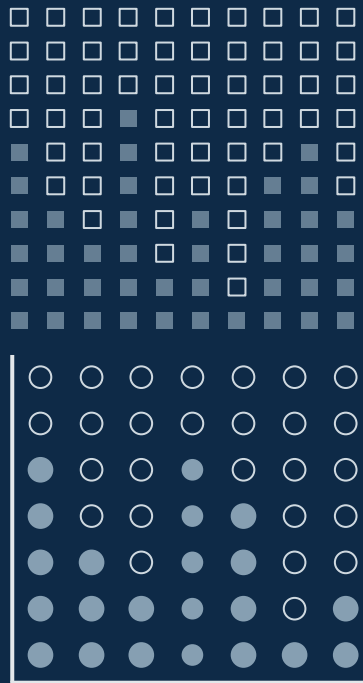












...and our sets of editable icons

You can resize these icons without losing quality.

You can change the stroke and fill color; just select the icon and click on the paint bucket/pen.

In Google Slides, you can also use Flaticon's extension, allowing you to customize and add even more icons.



Educational Icons



Medical Icons



Business Icons



Teamwork Icons



Help & Support Icons



Avatar Icons



Nature Icons



SEO & Marketing Icons

