

Deux questions à se poser :

1. Forme affirmative, interrogative ou négative ?
2. Quelle **personne** pour bien conjuguer " be " ?

Expressions associées :
...while...(tandis que...)
...when...(quand...)

J'étais en train de
... quand...

Prétérît continu

Forme négative :
je nie...

QUAND
l'utiliser ?

Action **en train**
de se passer dans le passé

Forme affirmative :
j'explique...

Forme interrogative :
je demande...



I
he
she
it

WASN'T

verbe
+ **ING**



you
we
they

WEREN'T

verbe
+ **ING**



WAS

I
he
she
it

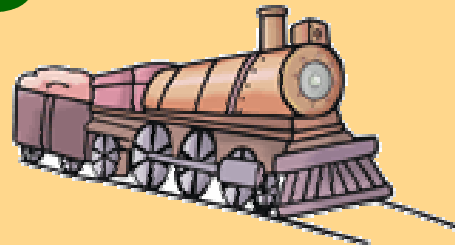
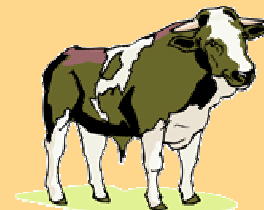
verbe
+ **ING** ?



WERE

you
we
they

verbe
+ **ING** ?



I
he
she
it

WAS

verbe
+ **ING**



you
we
they

WERE

verbe
+ **ING**

I was
you were
he/she/it was
we were
you were
they were



verbes en trois lettres (Consonne, Voyelle, Consonne) = double consonne
run : running

verbes en -Y : cry : crying

verbes finissant en consonne +-e : dance : dancing....(mais be : being)

mind map created by
A.Pihuit Imbert-04-10-08