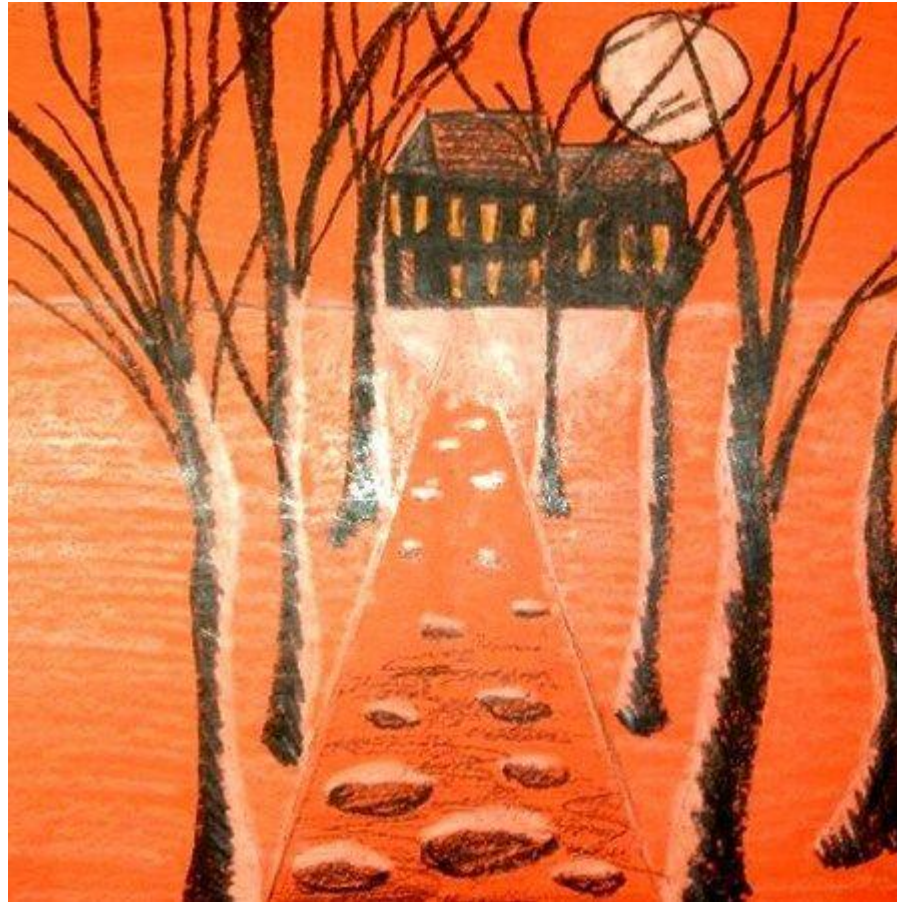
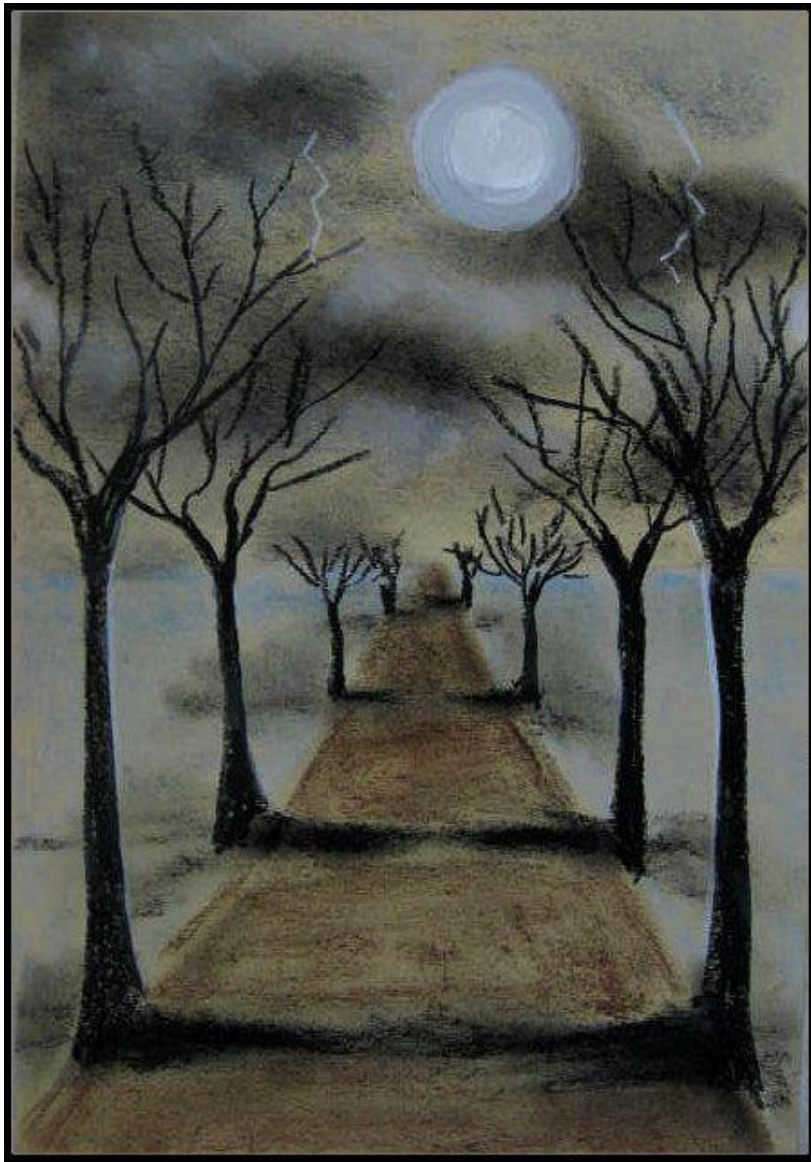
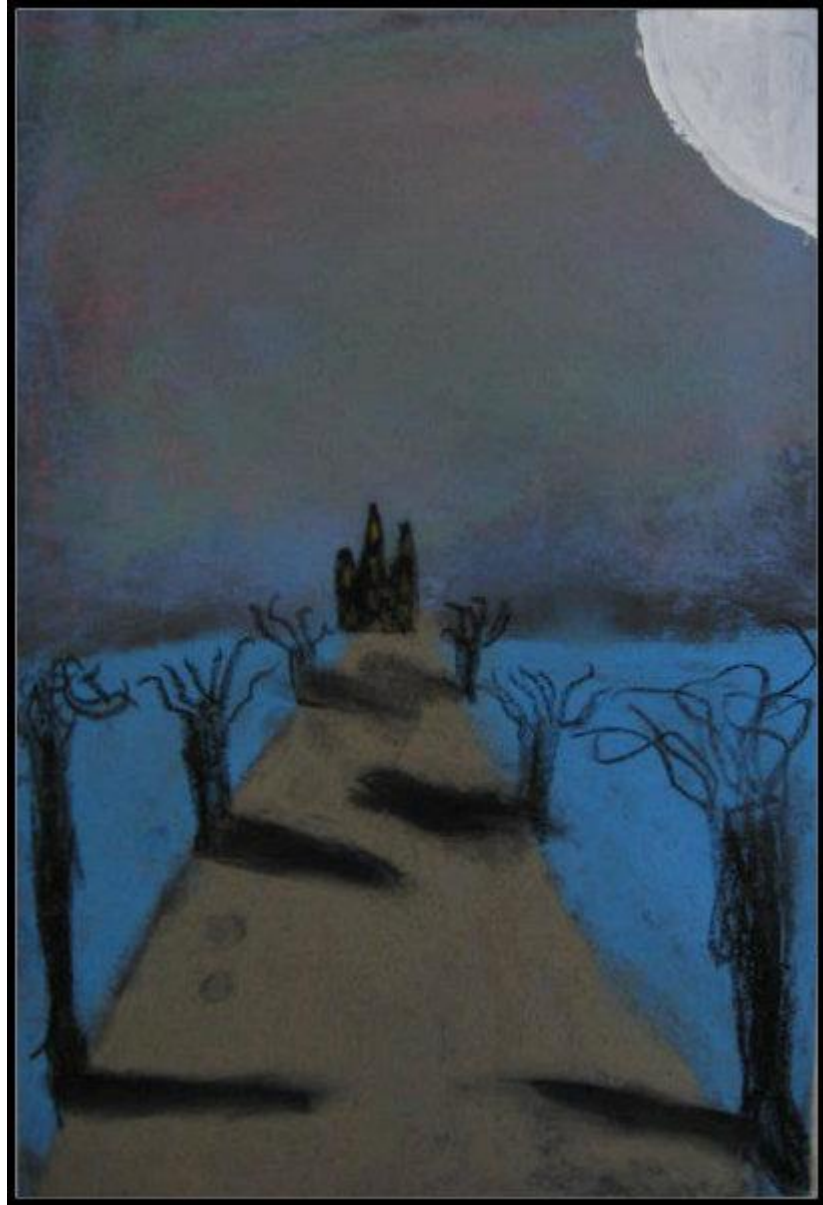
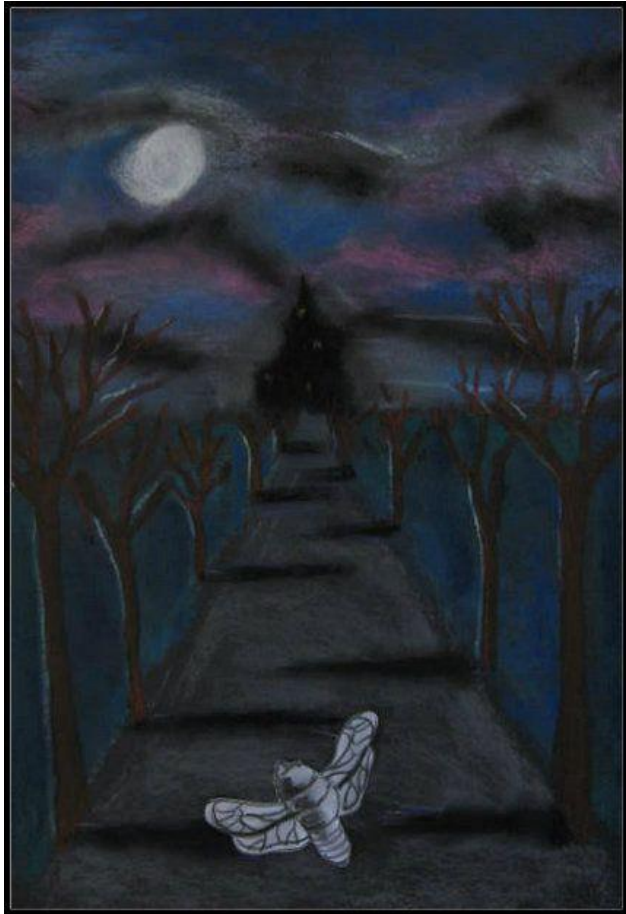
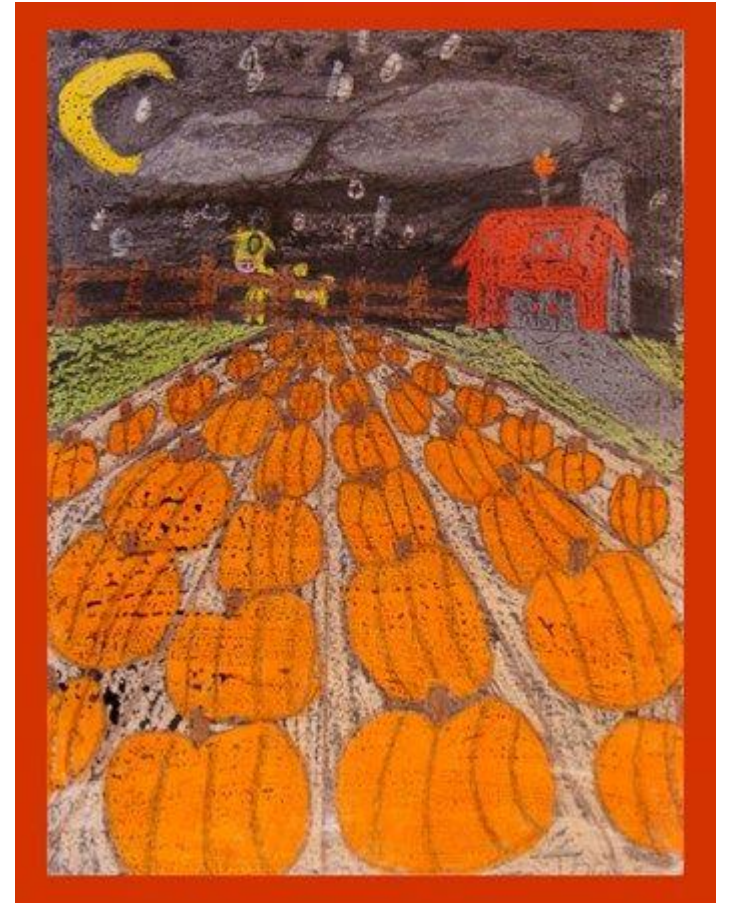
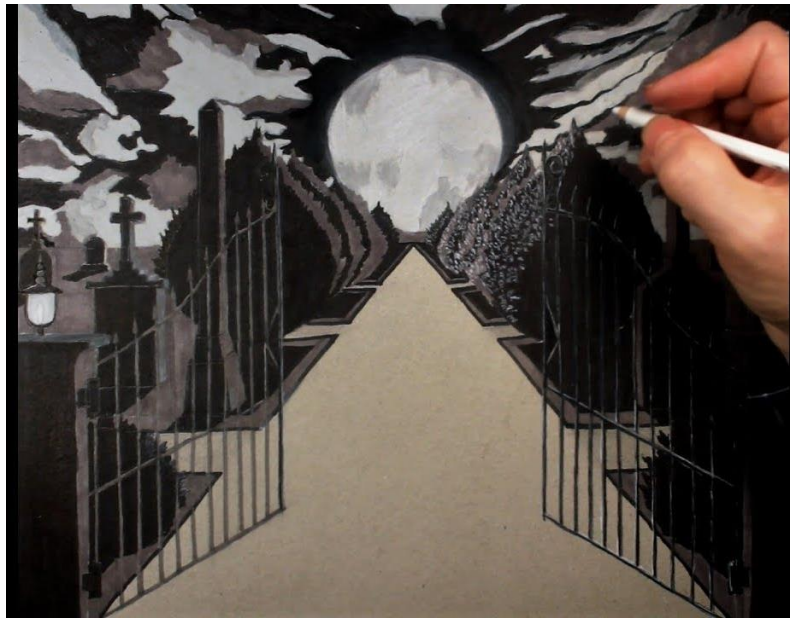
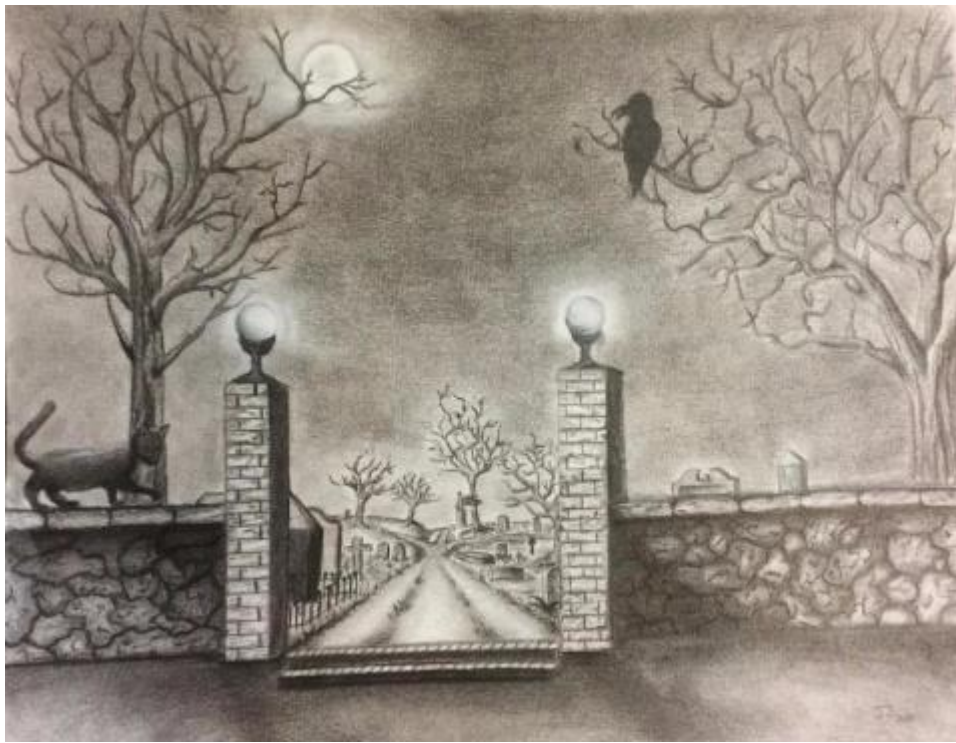


LA MAISON HANTÉE AU
BOUT DU CHEMIN.







UN TUTO EN ANGLAIS.

The background is a vibrant Halloween-themed illustration. In the center, a dark grey haunted house with yellow windows and a pointed roof sits on a green hill. A winding path leads from the foreground towards the house. The foreground is dark grey and features several glowing jack-o'-lanterns with various faces. On either side of the path, there are gnarled, leafless trees with yellow and orange foliage. Several white ghost silhouettes are scattered throughout the scene, some floating in the air and others on the ground. The overall color palette is dominated by greens, yellows, oranges, and greys, creating a spooky yet bright atmosphere.