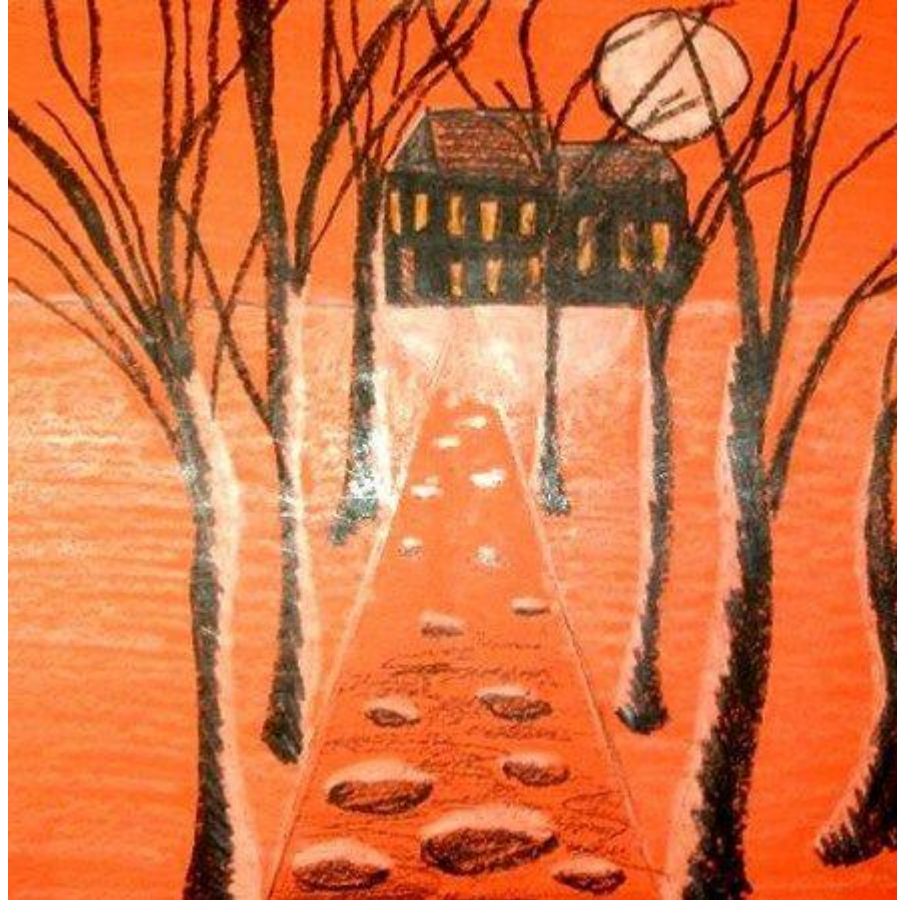
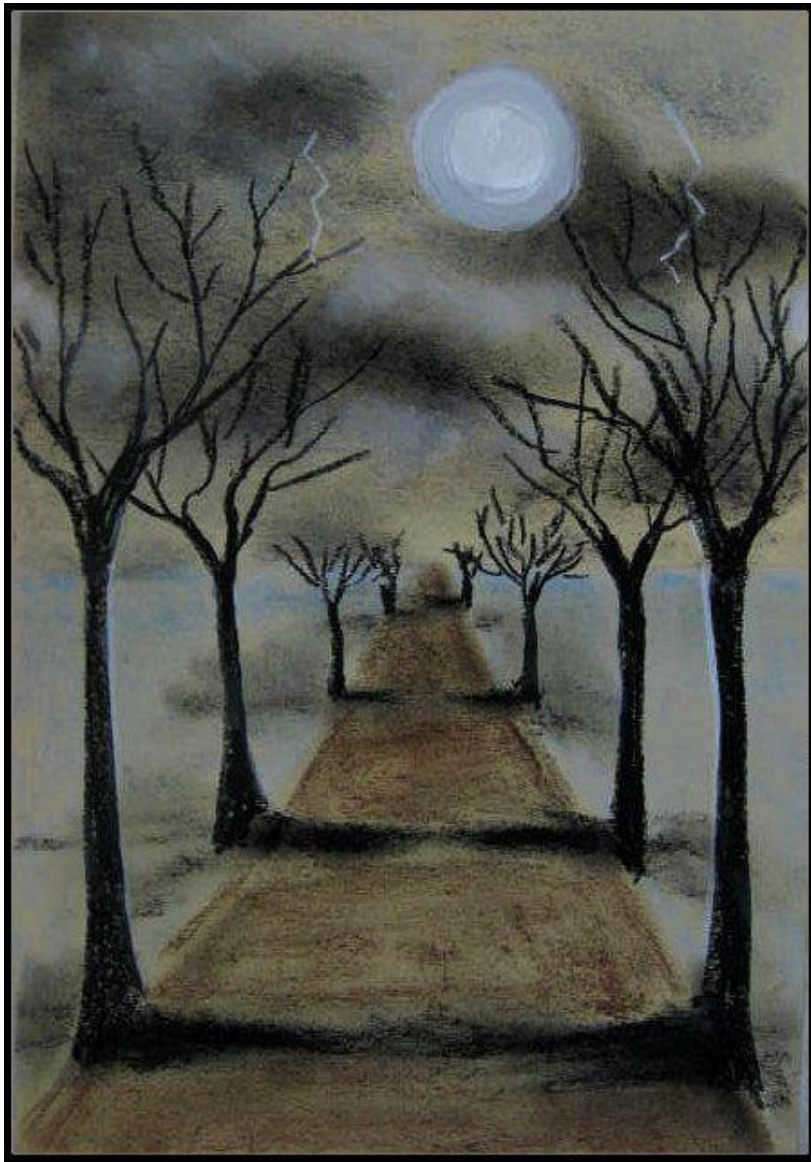
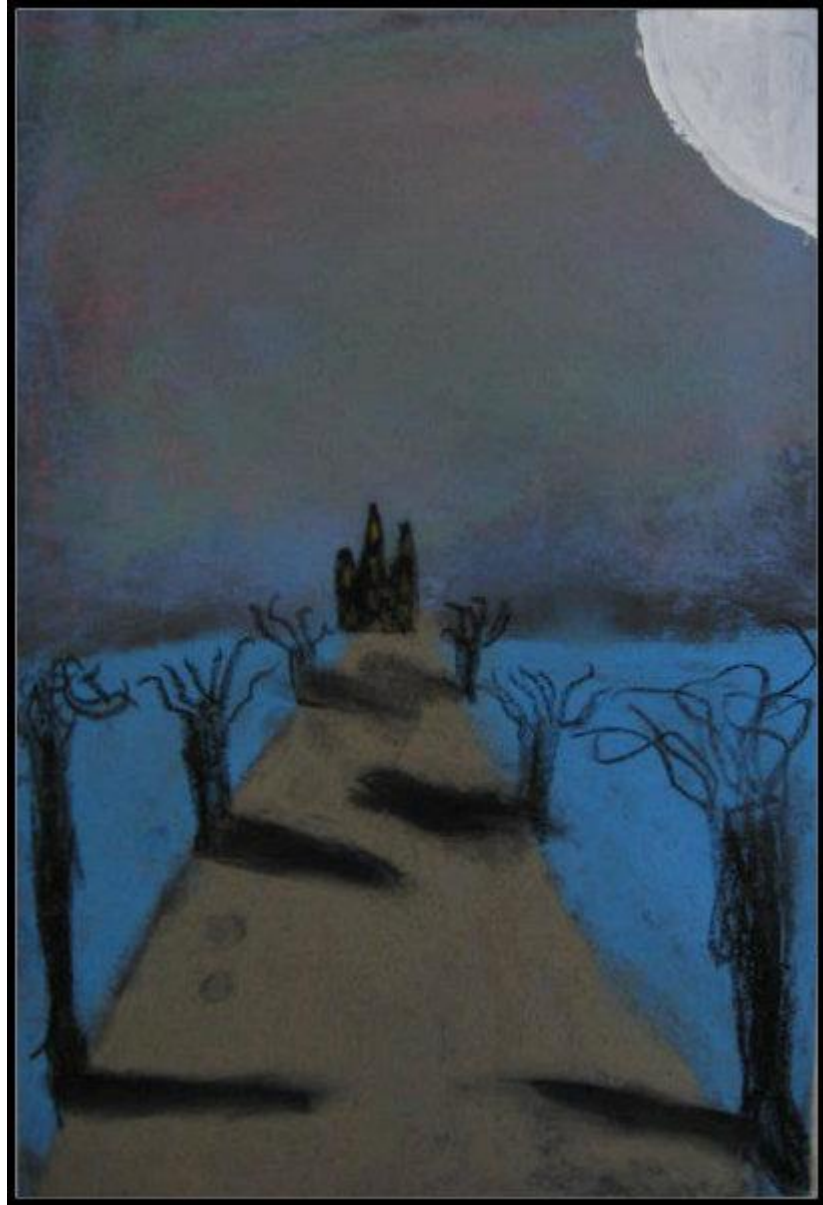
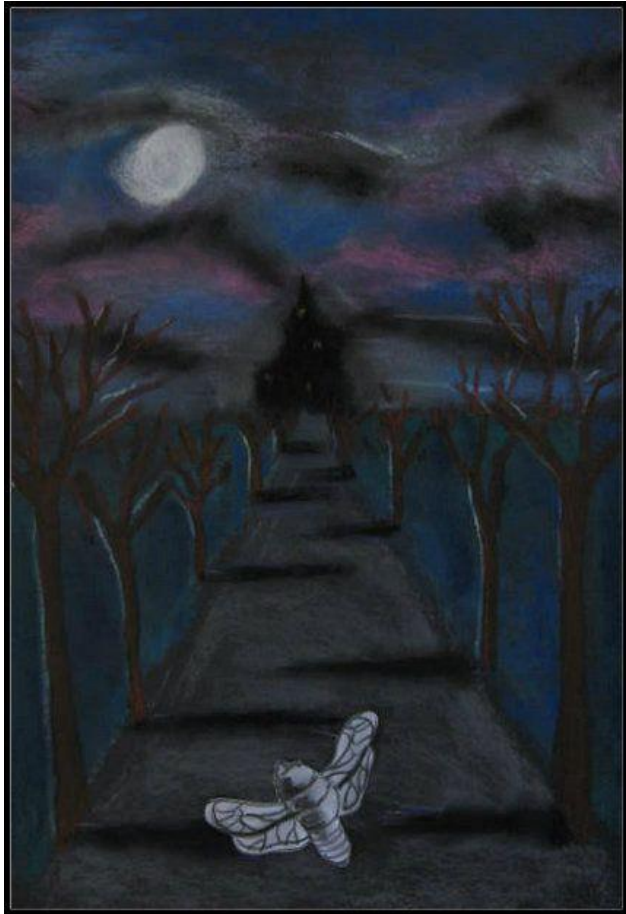
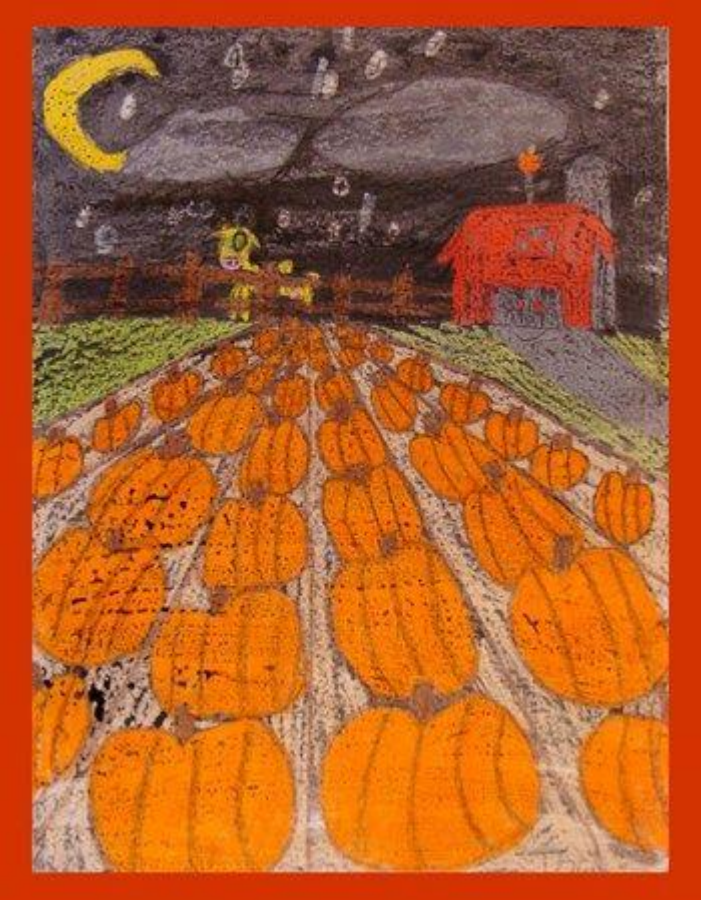
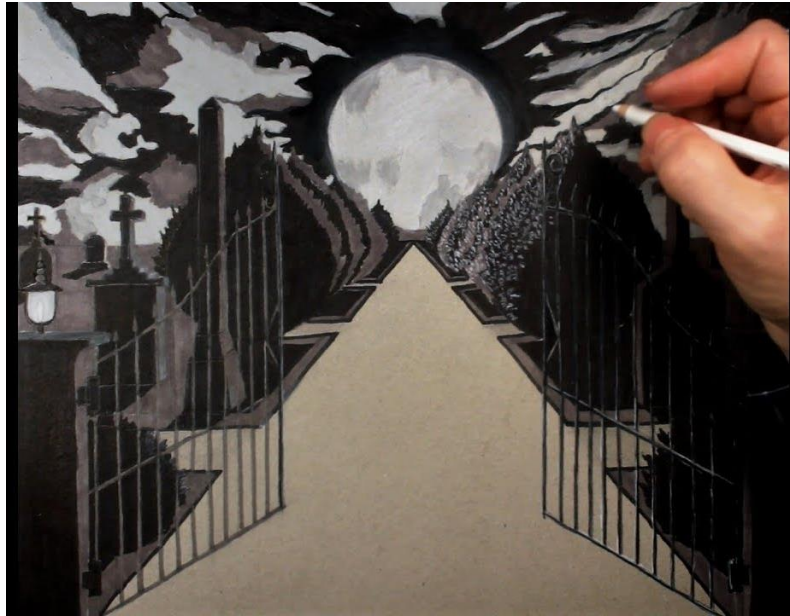
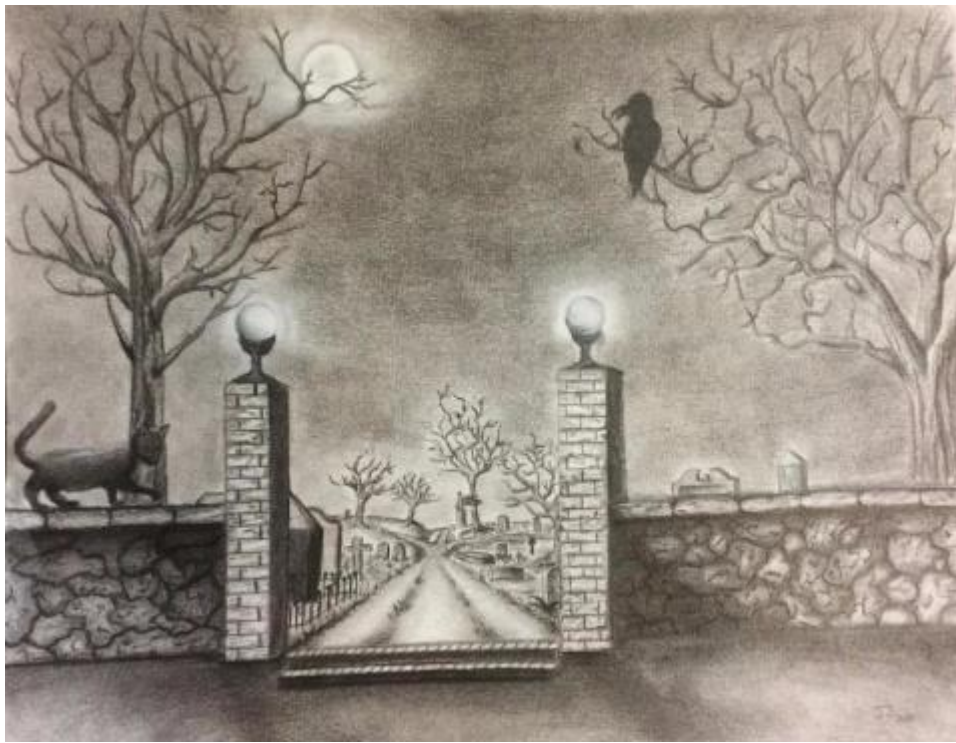


LA MAISON HANTÉE AU
BOUT DU CHEMIN.







UN TUTO EN ANGLAIS.

The background is a vibrant, cartoon-style illustration of a Halloween night scene. In the center, a dark grey haunted house with yellow windows and a pointed roof sits on a green hill. A winding path leads from the foreground towards the house. The foreground is dark grey and features several glowing jack-o'-lanterns with various faces. On either side of the path, there are gnarled, leafless trees with yellow and orange foliage. Several white ghosts with yellow eyes are floating in the air. The overall color palette is dominated by greens, yellows, oranges, and greys, creating a festive and spooky atmosphere.

DES RÉALISATIONS D'ÉLÈVES DE SECPA

