

Case study houses

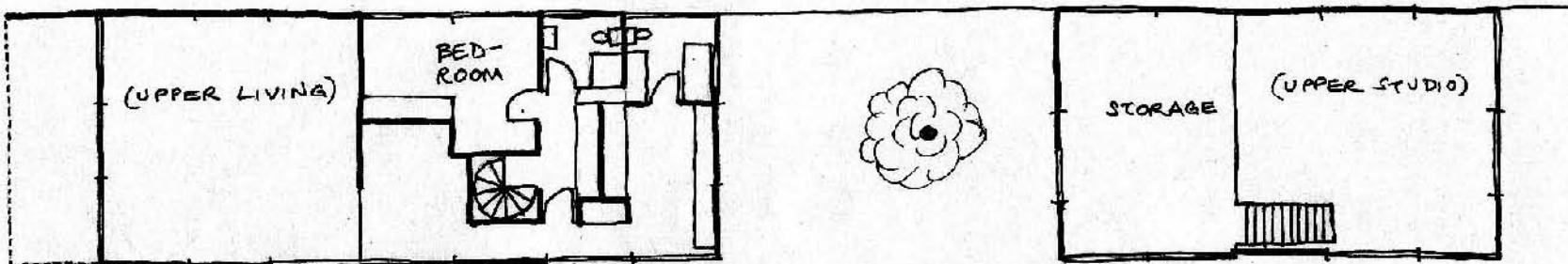
Charles Eames, Case Study House
#8, Pacific Palisades, California



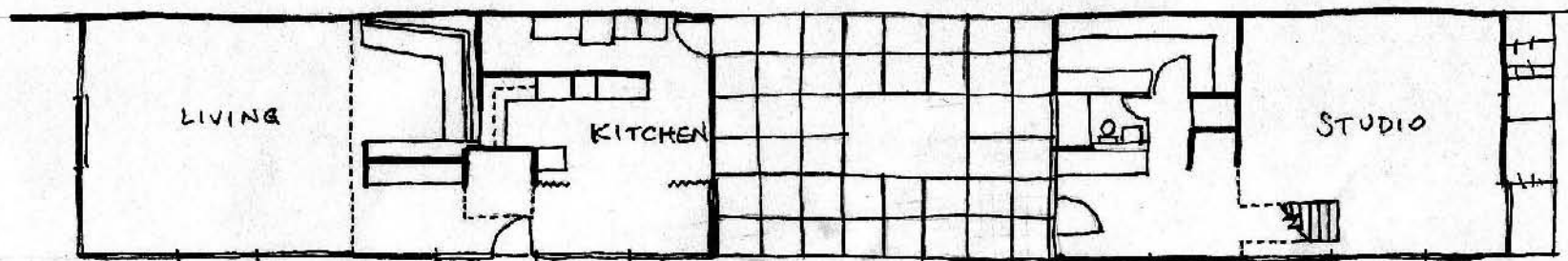
NATIONAL HISTORIC LANDMARK NOMINATION

USDI/NPS NHP Registration Form (Rev. 8-86)

UPPER LEVEL



LOWER LEVEL



EAMES HOUSE Floor Plan



Charles Eames, Case Study House
#8,



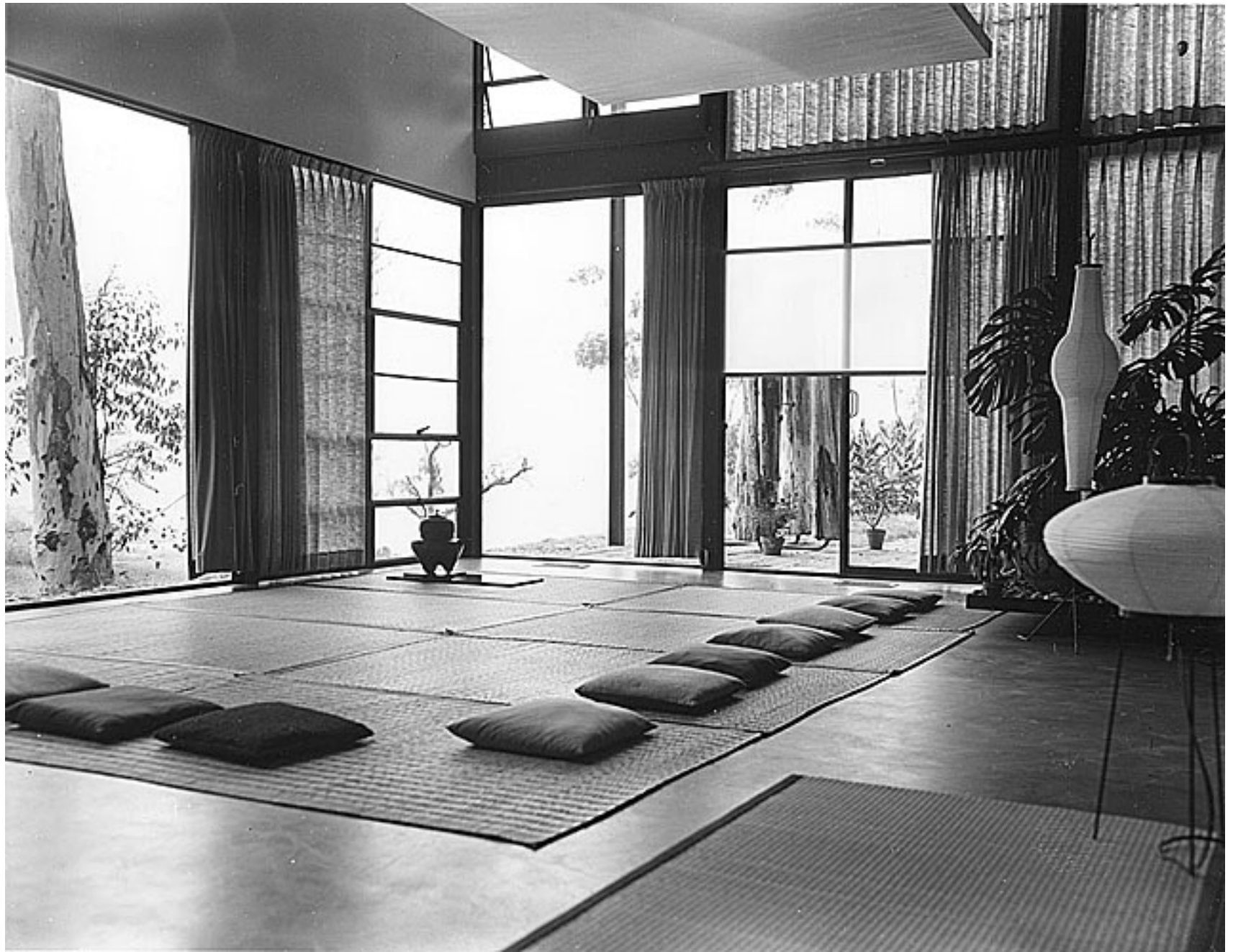
Charles Eames, Case Study House #8,



Charles Eames, Case Study House #8,



Charles Eames, Case Study House #8,



Charles Eames, Case Study House #8,



Case Study House #9 / Entenza House, 1950
Pacific Palisades, CA
Eames & Saarinen, architectes



Case Study House 22, 1960
Los Angeles, CA
Pierre Koenig, architecte



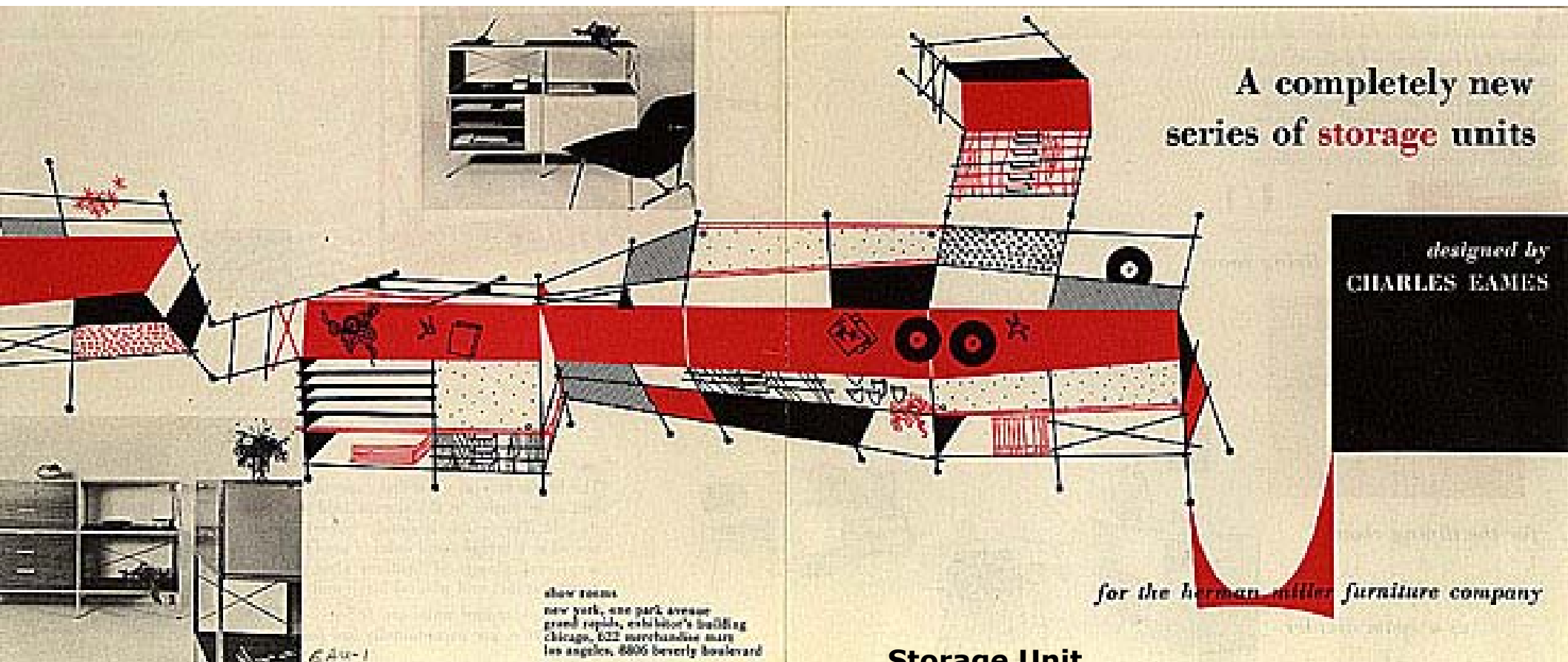


Chuey House,
1958
Los Angeles, CA
Richard Neutra,
architecte



Mobilier 50 : Ray et Charles Eames





Storage Unit



Storage Unit



Lounge chair
fauteuil et repose pieds contreplaqué garniture cuir