



# 7<sup>th</sup> Grade Career Exploration Module

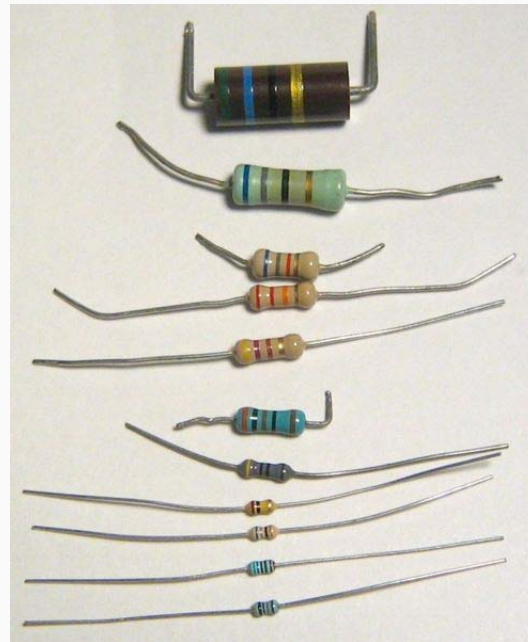
---

*Career Focus:*

## **Electrical Engineer Vocabulary**

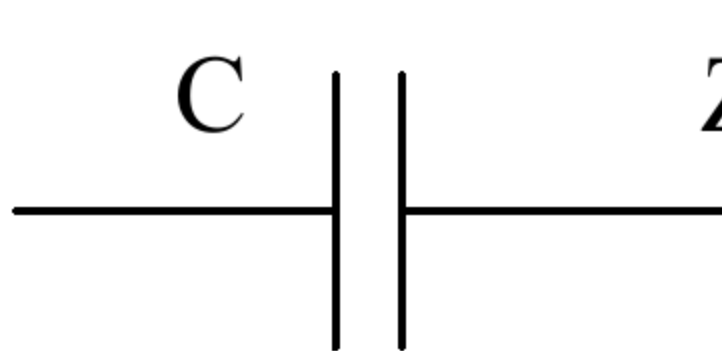
# Resistor

- a device that is used to control the flow of electricity in an electric circuit



# Impedance

- in an electrical circuit, the apparent opposition to the flow of an alternating current that is comparable to the actual electrical resistance to a direct current



The diagram shows a standard circuit symbol for a capacitor, consisting of two parallel vertical lines connected by two horizontal lines. The letter 'C' is positioned above the left vertical line.

$$Z = \frac{1}{C\omega}$$

# Capacitor

- a device that is used to store electrical energy



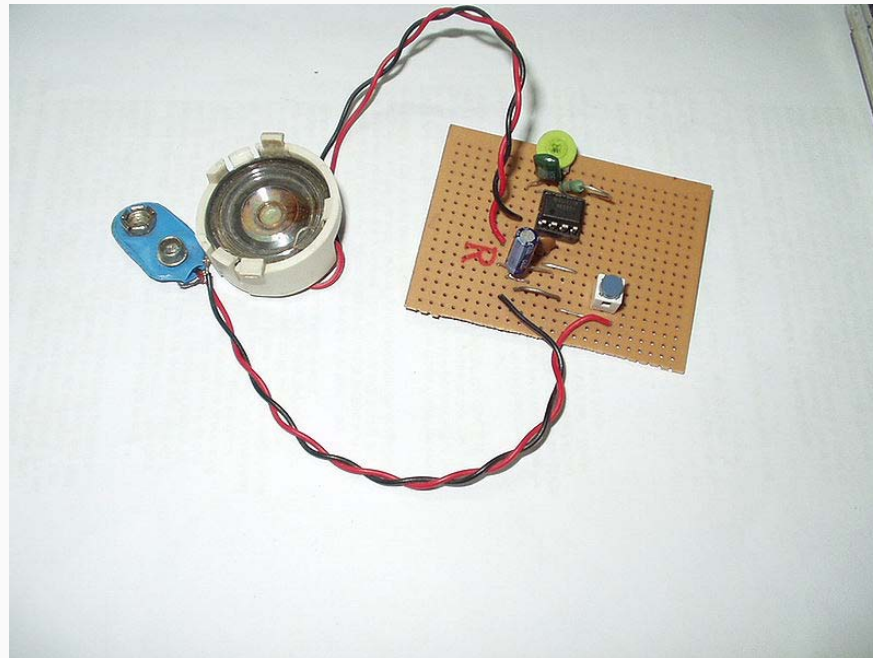
# Transistor

- a small device that is used to control the flow of electricity in radios, computers, etc.



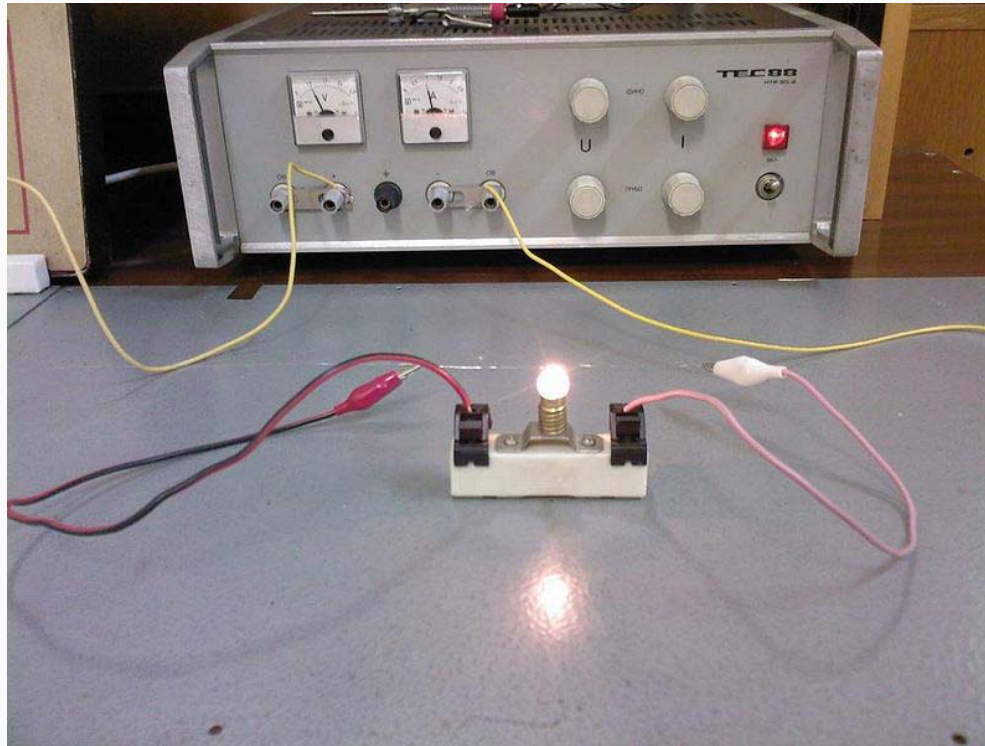
# Circuit

- the complete path that an electric current travels along



# Ohm

- a unit for measuring electrical resistance



# Farad

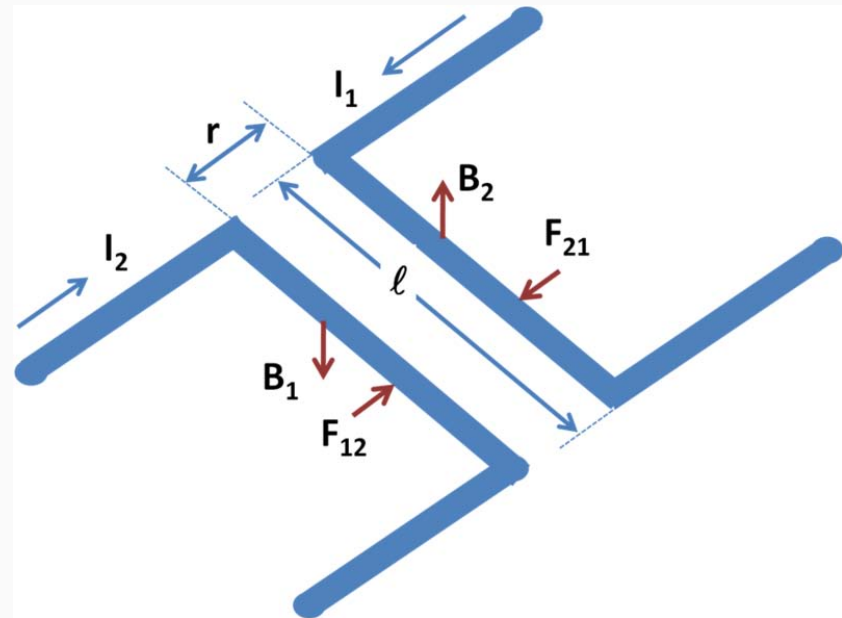
- the standard unit of measurement for capacitors (capacitance)





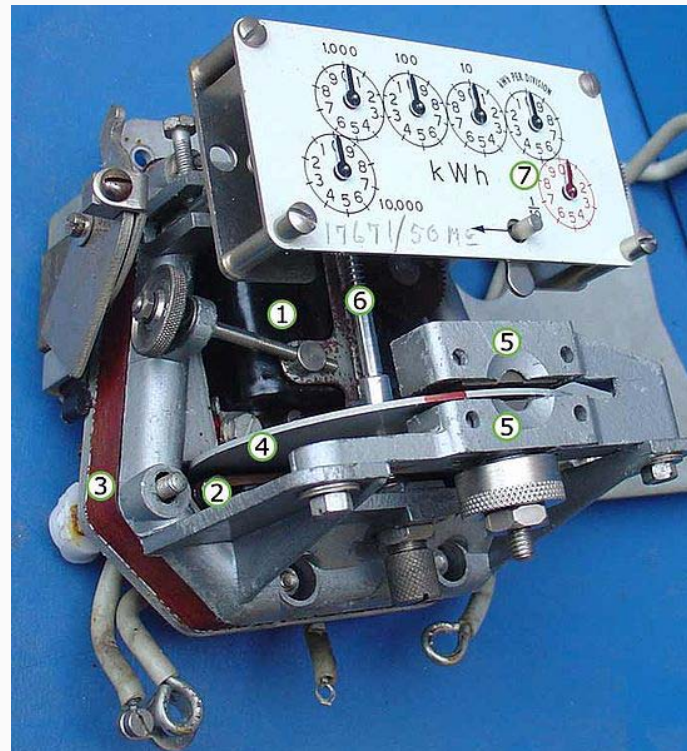
# Ampere

- a unit for measuring the rate at which electric current flows - also called an *amp*



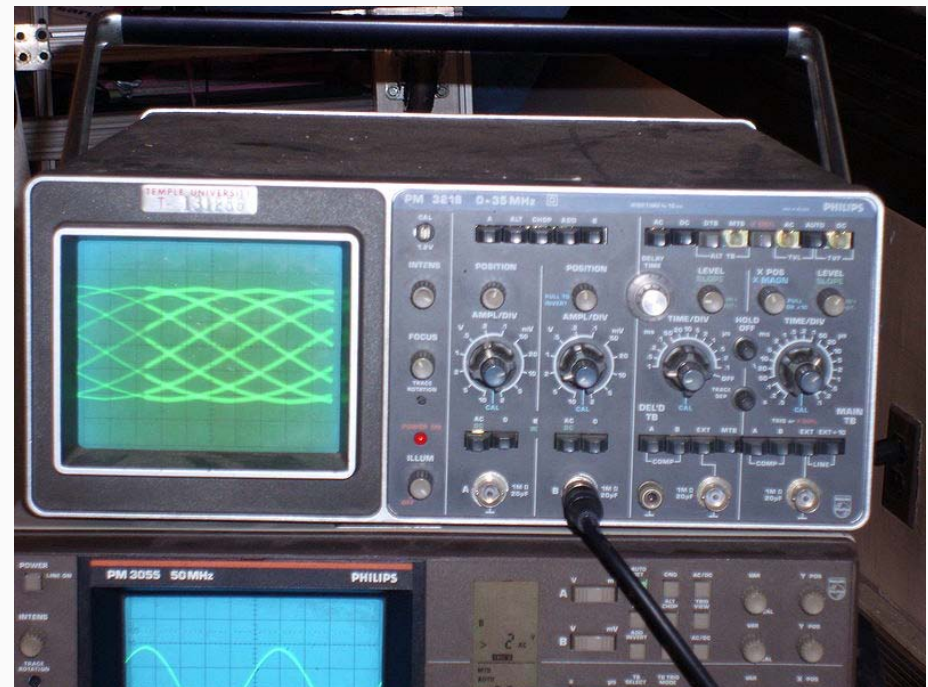
# Watt

- a unit for measuring electrical power



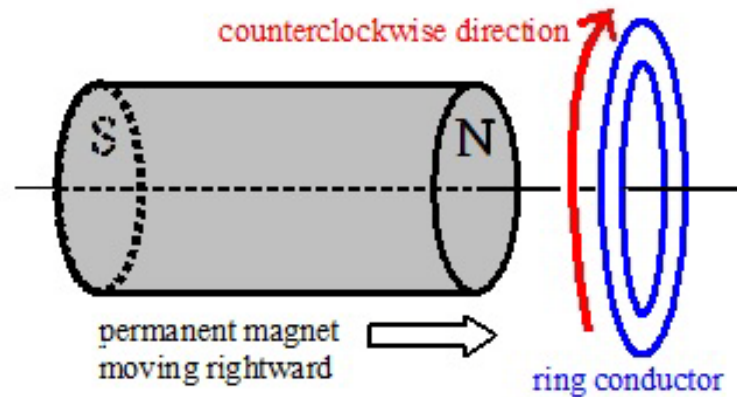
# Oscilloscope

- a test instrument that is used to measure and analyze electronic signals (waves and pulses) displayed on its screen



# EM (electromagnetism)

- a magnetic field that is produced by a current of electricity



# Ground

- a wire or metal object that makes an electrical connection with the earth – usually singular

